

PIKE PAVILION *at Nester House*



EXPANSION PROJECT

Alpha Xi Chapter of the Pi Kappa Alpha Fraternity, nationally recognized for its excellence in scholarship, dominance in leadership and undying brotherhood, is embarking on an ambitious project to expand the capacity of Nester House.



NESTER HOUSE TODAY

Opened in August 2007, Nester House is currently the smallest house of the top UC fraternities with only 28 beds. The IFC average is 49 beds. It is the oldest house without expansion or renovation since it opened its doors. It was designed for a chapter membership of 50-70 men and is no longer sufficient to meet the needs of a chapter membership that has varied in recent years from 150 to 185 men.

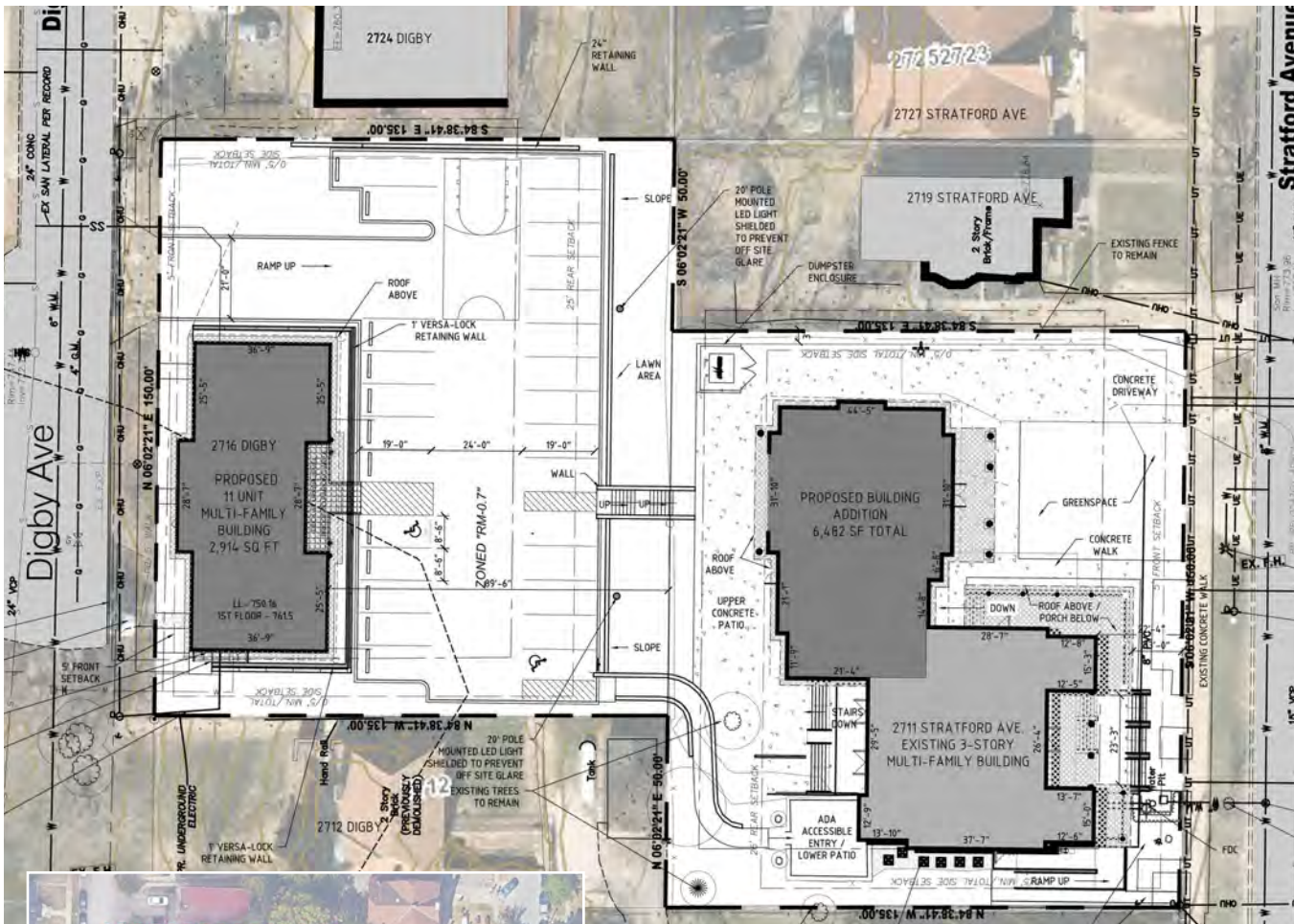
IFC HOUSING COMPARISON

Fraternity	Members	Beds	Building Cost	Completed
Beta Theta Pi	150	65	5.5 M	2024
Sigma Chi	141	40	5 M	2023
Sigma Phi Epsilon	107	49	2.5M	2014
Delta Tau Delta	124	30	2.5M	2011
Sigma Alpha Epsilon	141	50	4.5M	2010
Pi Kappa Alpha	182	28	2.5M	2007

PIKE PAVILION

Our vision is to maintain, sustain and retain our legacy of dominance – ensuring Alpha Xi remains the pinnacle of fraternity life on the University of Cincinnati campus for years to come. This expansion project includes:

- ◆ An addition, named Dever Hall, will provide 3,000 square feet of social/meeting space for chapter functions and active chapter meetings.
- ◆ Construction of a new APART, a free-standing apartment building that will accommodate a minimum of 12 brothers.
- ◆ Upgrading numerous areas in Nester House with emphasis on a totally remodeled basement level.



Aerial view of existing Nester House and surrounding expansion property



Upgrade of existing Nester House (left) and the addition of Dever Hall (right)

DEVER HALL

The Dever Hall addition to the northwest corner of Nester House is designed to accommodate large chapter functions, social events such as tailgate parties before UC athletic events and weekly Active Chapter meetings. The 16-foot glass door will provide easy access to the backyard of PIKE Pavilion. Inside the center, a small stairway leads to the main floor of Nester House. The outdoor area between Dever Hall and the new APART will include a 24-vehicle parking area and a half-court basketball court.



DEVER HALL

This multipurpose event center will be extremely flexible and feature a large, open social area suitable for various functions. It will include seating arrangements, large screen television, gaming devices and access from the front doors (on Stratford Avenue), the main floor of Nester House, and the 16-foot glass door at the rear.

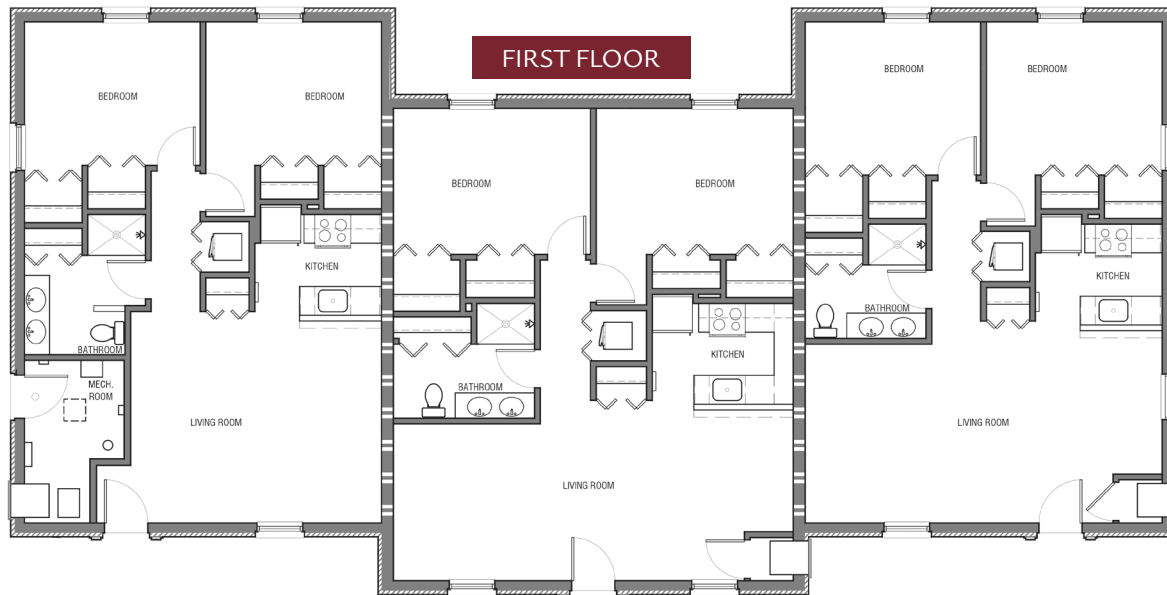
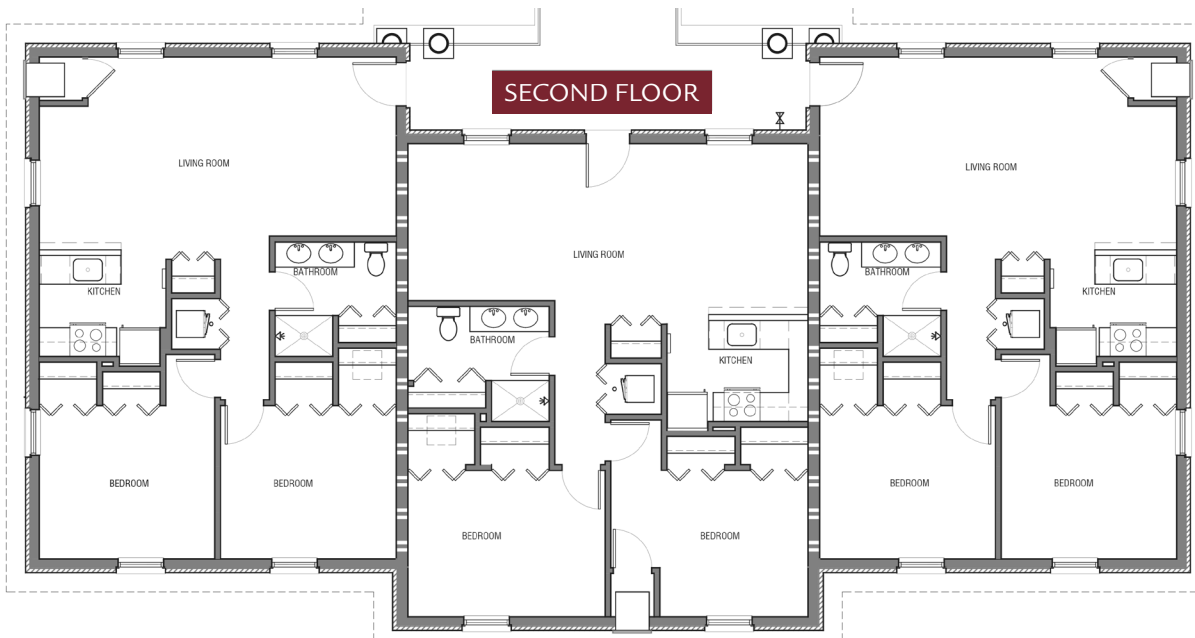


NEW APART

(Our previous chapter house on Brookline Avenue included a coach house in the backyard. It had a living area for 4 men each on the second floor. It was affectionately known as the APART.)

A two-story, free-standing apartment building will be built on the east side of PIKE Pavilion with the front facing Digby Street. Six apartments will house two men each or four each with bunk beds.

Both floors will have ground-floor access. First-floor residents will enter from the front of the building and second-floor residents will enter from the back on the parking lot level. Each apartment will feature a bathroom, kitchen, laundry room and living room.



View from Digby Street